

Spanish Fork Junior High School

Safe Walk Route Plan



2017-18

Spanish Fork Junior High School

Safe Walk Routes Description/Explanation

2017-18

In accordance with state standards, Spanish Fork Junior High School has identified school access routes for our students who live within the walk boundary established for the school. A map showing the identified routes can be viewed by following the link below.

<https://www.snapforschools.com/map/school-maps/ZkVegZsbRlO0MjSjh4Dhzw>

The intent of a safe walk route plan is not to identify every school access route or to identify the more convenient school access routes; it is to identify main walk/bike routes that are considered safer school access routes. Care has been taken to consult with local law enforcement, school PTA and School Community Council representatives, and the District's traffic safety committee in establishing these school access routes. Despite broad consultation and unanimous agreement from all parties involved in establishing these routes, no one, including the Nebo School District and Spanish Fork Junior High School can guarantee that the agreed upon school access routes are or will ever be completely free from hazards.

Parents are encouraged to walk or bike the school access routes with their child/children, to address specific concerns they may have, and to instruct their child/children to obey the laws and rules pertaining to pedestrian safety. If a parent feels their child/children should use a school access route that is not identified in this plan, it is a parent's prerogative.

As previously stated, the intent of a safe walk route plan is not to identify every school access route or to identify the more convenient school access routes. For this plan, school access routes leading to the school from areas where clusters of students live, have been identified and are described below.

School Address and General Safety Information: The school address is 600 South 820 East Spanish Fork Utah 84660. Spanish Fork Jr. High School serves a wide population of students in Spanish Fork, Lake Shore, Benjamin, and Palmyra areas. Where sidewalks are not available, students are encouraged to walk facing traffic. Walking students encompass a two mile radius from the school. Students are encouraged to use designated crosswalks, traffic signals, sidewalks.

1. From the West

Students coming to the school from west of Main Street should cross Main at the lights: 400 N, 200 N, Center Street, and 300 South, eventually making their way to either side of 300 S. Those on the north side of 300 S should cross to the south side at 600 East, where there is a crossing guard. Students on either side of 300 S should leave that street at 600 East,

approaching the school from 400 S instead. They should not proceed to the intersection at 820 East on Canyon Road, as there is no sidewalk available on the south side of the street. Even though there are now traffic lights with designated crosswalks and pedestrian signals at that intersection, traffic remains heavy both before and after school, and the offset streets promote a certain amount of confusion.

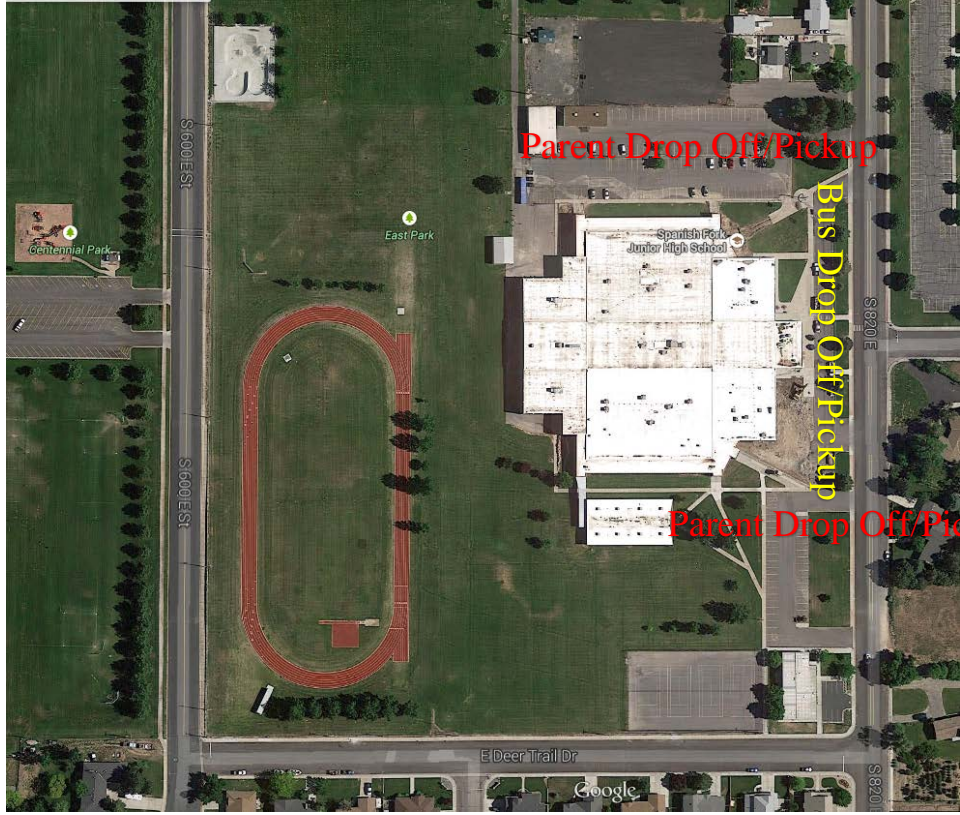
2. From the East

Students coming to the school from the east along Canyon Road should walk on the sidewalk on the south side of the road until they get to 950 East, where they should turn southwest onto 600 South. They will find a crosswalk where 600 South crosses 820 East in front of the school.

3. From the South

Students coming to the school from the southeast should get to 820 East and then north toward the school. Students coming to the school from the southwest should funnel from Fox Hill Drive, Wolf Hollow Drive, and 690 East streets to 700 South, where they can access the school grounds from both corners of the property or proceed up 820 East to the front of the school.

All intersections of concern due to high vehicle traffic and high foot traffic have lights or stop signs, and they are safe to cross after following reasonable safe-crossing protocols. As noted above, even though the heavy-traffic intersection at Canyon Road and 820 East now has signals and crosswalks, we recommend avoiding that intersection if possible.



Parent Drop Off/Pickup

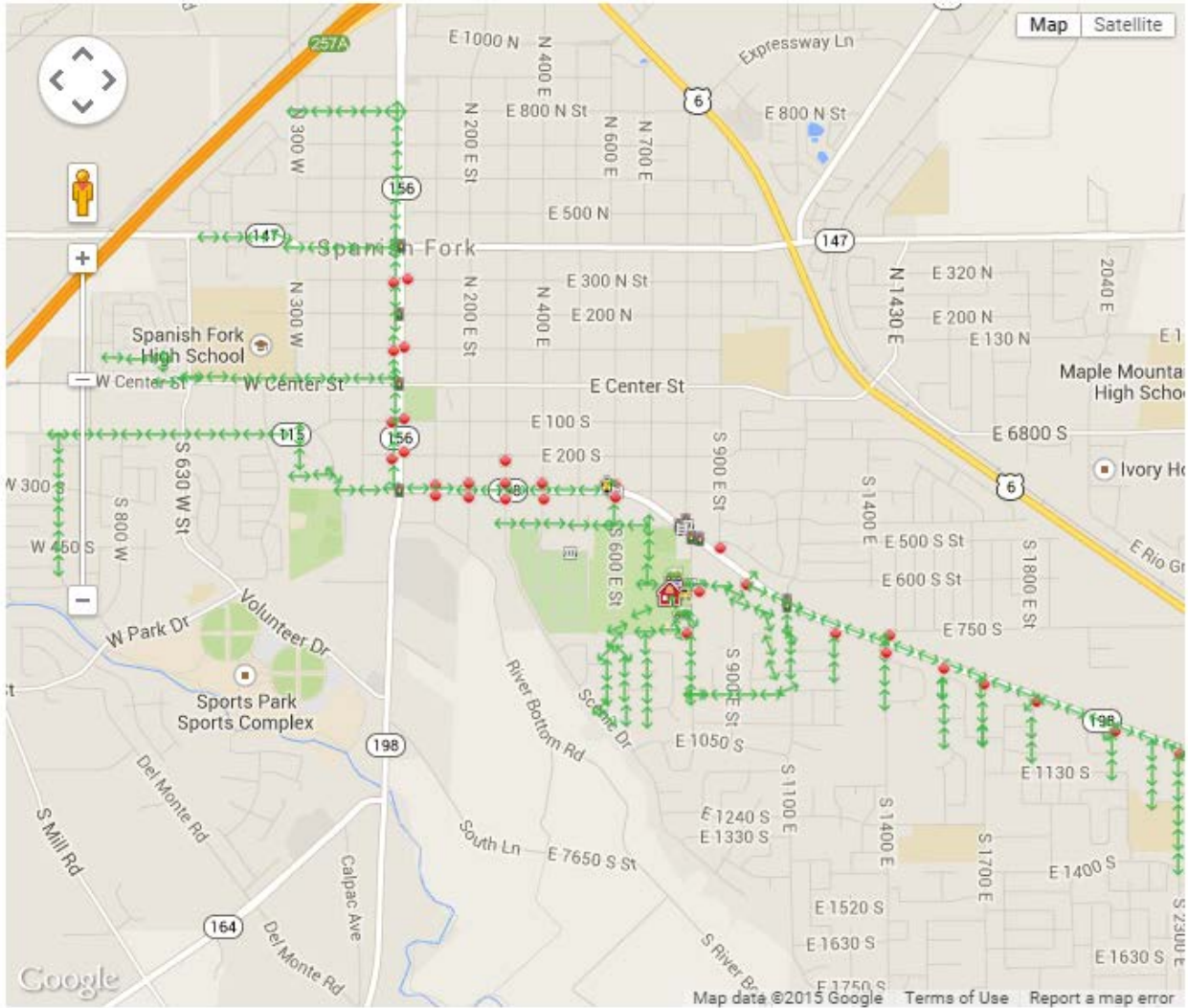
Bus Drop Off/Pickup

Parent Drop Off/Pickup



North

Spanish Junior High SNAP Map



School District and Governing Authority Concerns

2016/2017 School Year

Safety Items Requiring Attention from the Nebo School District	<u>NEW</u> Safety Items Requiring Attention from a City, the County, or UDOT	<u>PAST</u> Safety Items Requiring Attention from a City, the County, or UDOT
<p>There has been some discussion about moving the bus lane to the south so it goes around the tennis courts, which would free up the current bus lane for parent pickup and drop off. This could relieve traffic congestion during peak periods before and after school. There are safety concerns about students having to move between busses as they leave the school and are picked up across the street at the church to the east.</p> <p>This improvement has been rejected from the capital improvement list for the 2017-18 school year.</p>		

